

## **Salt Lake Community College Instructional and Administration Building**

Taylorsville, Utah

is requesting artist's  
qualifications for the  
creation of public art...



Salt Lake Community College in partnership with the Utah Division of Facilities Construction and Management and the Utah Arts Council's Public Art Program is requesting artist or artist team qualifications for the creation of site specific artwork(s) for the Salt Lake Community College Instructional and Administration Building on the Redwood Road campus in Taylorsville, Utah.

## **DEADLINE FOR SUBMITTAL: January 13, 2012**



**Vision:** Salt Lake Community College will be the premier comprehensive community college in the nation.

**Mission:** Salt Lake Community College is a public, open-access, comprehensive community college committed to serving the broader community. Its mission is to provide quality higher education and lifelong learning to people of diverse cultures, abilities, and ages, and to serve the needs of community and government agencies, business, industry and other employers.

The College fulfills its mission by:

- offering associate degrees, certificate programs, career and technical education, developmental education, transfer education, and workforce training to prepare individuals for career opportunities and an enriched lifetime of learning and growing;
- offering programs and student support services that provide students opportunities to acquire knowledge and critical thinking skills, develop self-confidence, experience personal growth, and value cultural enrichment;
- maintaining an environment committed to teaching and learning, collegiality, and the respectful and vigorous dialogue that nourishes active participation and service in a healthy democracy.

## **Salt Lake Community College Redwood Road Campus and the Instructional and Administration (IAB) facility**

The Salt Lake Community College Taylorsville Redwood Road Campus is located in the center of the Salt Lake Valley and has been the College's primary campus since 1967. The campus anchors the school's core academic, athletic and student service facilities serving over 15,000 students per year.

The IAB will be a state-of-the-art facility that will house the College's administrative functions, including the office of the President, as well as Business Services, Institutional Advancement, and Public Safety. Additionally the IAB will provide Instructional Administration with space for the Provost, Assessment, Planning and Academic Development, as well as the Dean, Department Chairs, and Faculty for Humanities and Social Sciences. The IAB will provide almost forty classrooms and several special purpose laboratories, conference / study rooms, and informal collaboration spaces. Along with flexible public gathering spaces and building support spaces, the IAB is designed to meet the needs of the College for years to come.

As designed the new IAB will provide SLCC with approximately 129,000 gross square feet with 82,000 net square feet of usable space. The design has placed the instructional offices and instructional spaces in a three story wing with the instructional spaces on the lower levels. The administration spaces will be in the connected but separate four story wing. The main building support spaces are located on a below grade level.

The IAB will occupy the space on the south edge of the west end of the quad. This location shifts the core of the campus, maximizing convenient adjacency to major academic and student services, such as the Library (on the north edge of the quad) and the Student Services Building (on the east edge of the quad.)

### **Architectural Design and Concept**

Guided by the College's vision, the IAB will be a premier facility for higher education. The IAB is centered on the needs of the College Administration and the Humanities and Social Services and will provide well-equipped classrooms for the entire campus. The IAB will be a safe, healthy, and inspiring atmosphere in which to work, learn and teach, incorporating the highest levels of life safety and security, natural daylight and views, clean air, and energy and water efficiency. The IAB is a model facility for pedagogical instruction and social interaction, integrating both casual and formal spaces, large group and well as intimate space for gathering of students and faculty. State-of-the-art technology is integrated throughout the design. Opportunities for creative and intellectual expression, including permanent and temporary presentation, display and exhibition of relevant work, from within the College and beyond, is explored and incorporated in meaningful ways in the building. Flexibility and adaptability were key considerations in the design of the instructional spaces to address changing needs in the future.

The IAB will become the new gateway to the College at the west end of campus. The architecture – the building siting, massing, form and material palette – of the IAB embodies this gateway vision, and expresses a sense of purpose and direction of the College. Glass will provide inside – outside connectivity, blending the life and landscape of the campus and the building, infusing the spaces within with natural light and energy. New compositions of structure, brick, and metal accents will build upon the textures and rhythms of the campus, and aspire to timelessness.

The “H-shaped” building has three distinct wings, for administration (four stories,) instruction (three stories,) and faculty (three stories.) The H-plan is oriented to form north and south facing courtyards that offer distinctly different entry experiences for the administrative wing (south facing the larger community) and the Instruction and faculty wings (north facing the campus interior.)

The architectural expression of the movement of people into, around and through the building is one of the key components underlying the design of the IAB. This movement of people is typically curvilinear and the resulting design softens the interior corridors with curving pathways with occasional “eddies” or wider spaces in which to pause and interact.

Building entries are marked with grade-to-parapet “clear” glazed curtain wall planes allowing for dramatic views into the dynamic, curvilinear spaces within the building.

The exterior massing and materials are derived largely from the existing campus structures. Brick, in a color blend to match the building’s neighbors, and glass are the primary materials. Terracotta window coverings are used to visually soften the window openings, as well as provide an element of sun-control. To compliment the brick, small-scale, earth-toned metal panels are utilized on the top story. The elevations of the east and west office wings are primarily brick while the center classroom wing has greater transparency with larger areas of insulated windows.

### **Committee Statement:**

The purpose of this statement from the Art Selection Committee is to provide useful descriptors for interested artists to understand the intentions of the committee, and, ultimately, to facilitate the development of relevant, exciting and engaging site-specific art work.

The IAB will provide new space for three main groups: 1. General classrooms, labs, and informal gathering and study spaces for students and instructors, 2. Offices and support spaces for the President, the College’s administration and related departments, and the Provost, and 3. Home of the faculty and department chairs for the School of Humanities and Social Sciences. Thus, proposed art work may express or reference the mission of SLCC and the School of Humanities and Social Sciences:

SLCC’s mission is mentioned earlier in this document on page 2. The College’s mission encompasses the School of Humanities and Social Sciences’ mission to help students flourish not only economically, but intellectually and as human beings by preparing students to live and participate meaningfully in a pluralistic democratic society and a rapidly changing global society. The School’s goal is for students to understand the values necessary for the health of democracy, for the creation of a decent world culture, and for a robust global citizenship.

In support of this, the School of Humanities and Social Sciences seeks to cultivate in their students an appreciation for the life of the mind. The School seeks an open environment where students see themselves as active learners who feel that they can fearlessly take intellectual risks; where their curiosity can bloom and grow; where they accept responsibility for their own learning, discover and pursue their passions, and take charge of their own knowledge.

The School of Humanities and Social Sciences intends that education be a continuing effort to examine “our lives, our relations, our communities, and our futures,” that it be an education that will reveal hidden ways of thinking and suggest alternative frameworks and better ways of living in an ever-changing world.

The committee is interested in both descriptive and conceptual art work that suggests or communicates the ideas, feelings, and themes listed in the preceding paragraphs. Members of the committee have also pointed out the varied light conditions that will be inherent in the building design (seasonal and daily) and offer encouragement for artists that are so inclined to consider work that ties exterior to interior and vice versa..

The committee has identified the following areas as possibilities for the proposed public art commission, but is open to artist-suggested sites throughout the interior and/or exterior site as appropriate and applicable for their work: 1. The IAB Atrium (three open stories), 2. In the north courtyard, near the main student entrance (along the walkway that connects the IAB to the Student Center and the Library), 3. In the south courtyard, near the main administration entrance, and 4. At the southern end of the walkway on the west side of the IAB building.

## **BUDGET**

\$192,500 is available for all related expenses of this Public Art commission(s) including (but not limited to) artist fees, engineering, fabrication, insurance, shipping, travel, installation, documentation, etc.

## **ELIGIBILITY**

Professional artists / artist teams are eligible to apply. Art selection committee members, Utah Arts Council Board and employees, and subcontractors or consultants of AJC Architects are not eligible for this project. By statute the Committee will give preference to Utah artists and artists from other jurisdictions that have reciprocal allowances for non-resident artists.

## **SUBMISSION OPTIONS, INSTRUCTIONS AND REQUIRED MATERIALS**

Interested artists may submit applications online or hard copy. The deadline is the same for both methods and is not a postmark deadline. Please do not include supplemental materials beyond the requirements listed below. All applications must include the following:

### **ONLINE METHOD:**

- Register at [www.dccgrants.org](http://www.dccgrants.org) and follow the directions for registration and submitting material for this Public Art Request for Qualifications
- Identify each image with title, year, medium, and dimensions
- Upload up to ten (10) images maximum. These images should be documentation of previous work of site-specific art in public places and must be JPEG format, 1920 pixels maximum on the longest side, 72 dpi, with compression settings resulting in the best image quality under 2MB file size.
- Type in or “copy and paste” in the field requesting the letter of interest of not more than three typewritten pages. This letter should include the artist’s reasons for interest in this project in particular. In doing so, the artist should also describe how his/her work and/or experience relates to the project.
- Type in or “copy and paste” in the field requesting a professional resume
- If the artist’s work cannot be documented well with still image you may submit movie files via the “Hard Copy Method” listed below. Movie files cannot be submitted via the online portal.

#### **HARD COPY METHOD:**

- A PC compatible CD Labeled with applicant's name, and contact information containing:
  1. A letter of interest of not more than three typewritten pages in pdf format. This letter should include the artist's reasons for interest in this project in particular. In doing so, the artist should also describe how his/her work and/or experience relates to the project.
  2. Up to ten (10 ) images maximum of previous site-specific public work. All images must be in JPEG format, 1920 pixels maximum on the longest side, 72 dpi, with compression settings resulting in the best image quality under 2MB file size. The image files should be named so that the list sorts in the order of the image listing.
  3. A pdf document indentifying each image to include title, year, medium, dimensions.
  4. A professional resume in pdf format
- If the work cannot be documented well with still images a DVD (of no more than 3 minutes) may be submitted as documentation of artist's projects. Please note only one media, movie file or jpeg, can be presented to the committee per artist in this preliminary phase.

If the artist wishes the material returned, an addressed and stamped envelope of ample size and postage for return of the CD or DVD should be included. Material that is not accompanied by a stamped envelope cannot be returned.

The Utah Arts Council will not be responsible for applications delayed or lost in transit. While all reasonable care will be taken in the handling of materials, neither the Utah Arts Council nor the Salt Lake Community College IAB Selection Committee will be liable for late, lost or damaged materials or electronic files. Faxed or e-mailed applications cannot be accepted.

The Salt Lake Community College Center IAB Selection Committee reserves the right to withhold the award of a commission or re-release the call for entries should it be determined the proposals submitted are unacceptable.

**DEADLINE: Hard copy or online submission packages must be RECEIVED on or before January 13, 2012 by 5 p.m. Mountain Time  
(THIS IS NOT A POSTMARK DEADLINE)**

Hard copy applications may be sent by mail, hand delivered or express delivered to:

Jim Glenn  
Attention: SLCC IAB Project  
Utah Public Art Program  
300 S. Rio Grande  
Salt Lake City, UT 84101

Online applications may be uploaded at: [www.dccgrants.org](http://www.dccgrants.org)

## SELECTION PROCESS AND SCHEDULE

The Selection Committee will review applicants from which a short list of finalists will be selected. Selected finalists will be asked to present a full proposal to the committee on March 26, 2012 to include budget and time-line. Every effort will be made to provide finalists with information and contacts to assist with project research in the development of their proposal. The finalist honorarium of \$2,000 will be applied toward the commission amount for the artist(s) awarded the commission. Final selection(s) will be made from the semi-finalists.

January 13, 2012	Deadline for receipt of qualifications
January 30, 2012	Committee reviews applications
March 26, 2012	Finalist proposal presentations and interviews
January 2013	IAB opens

## ART SELECTION COMMITTEE

Bob Askerlund	SLCC Assistant VP for Facilities Services
Joshua Greene	AJC Architects
Jill Jones	AJC Architects
Philipp Malzl	Artist and Utah Arts Council Board
Megan McDowell	SLCC, Office of the President
Ed Rosenberg	SLCC , Assistant Professor Visual Art and Design
Jim Russell	DFCM Project Manager

If you have any questions about this or other projects information is available at: [www.utahpublicart.org](http://www.utahpublicart.org) or contact: Jim Glenn at 801-533-3585 or e-mail at: [jglenn@utah.gov](mailto:jglenn@utah.gov) or Fletcher Booth at 801-533-3586 or e-mail at: [fbooth@utah.gov](mailto:fbooth@utah.gov)

Images courtesy AJC Architects and Salt Lake Community College



Student Entrance

Instructional Administration Building at Salt Lake Community College Basis of Design 11



Overall South View

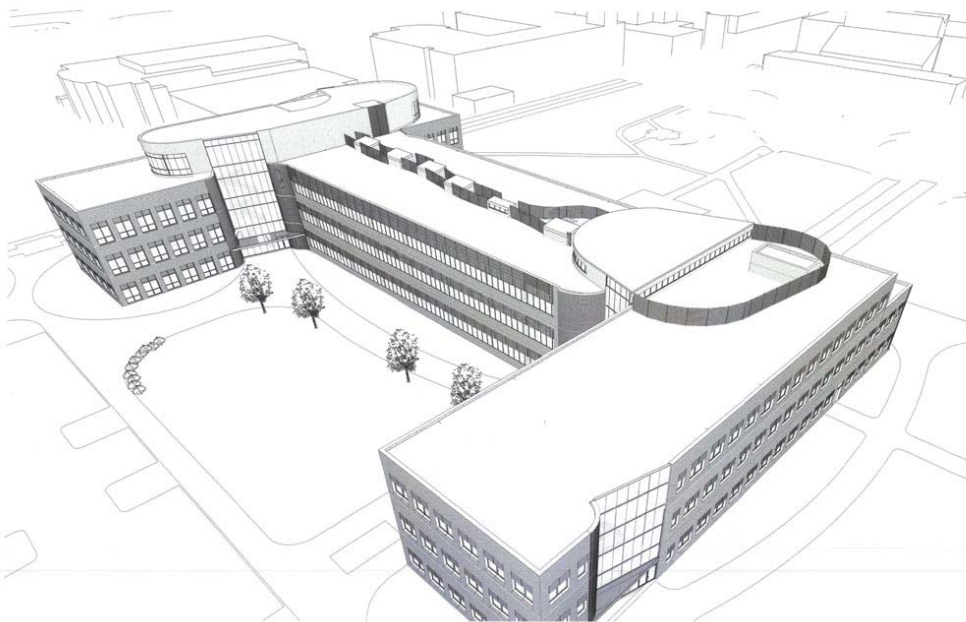
Instructional Administration Building at Salt Lake Community College Basis of Design 7

# Landscape Plan



SLCC Instructional & Administration Building

July 2011



Overall View from Above



CLASSROOM CORRIDOR | Break out space with white board

July 20, 2011



INTERIOR ATRIUM | View from north entry

July 20, 2011



CLASSROOM CORRIDOR | Study Rooms

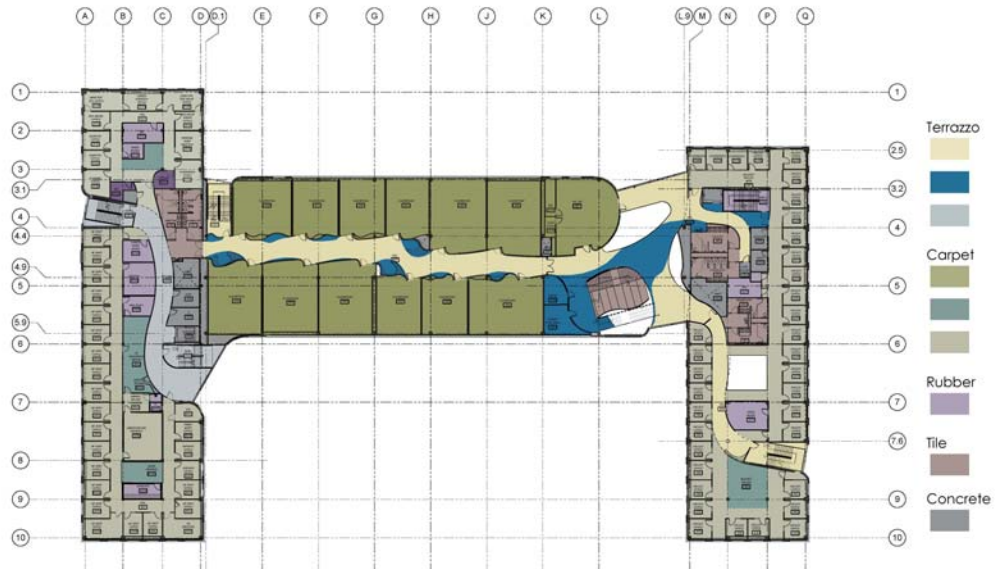
July 20, 2011





FIRST FLOOR | Finish Plan

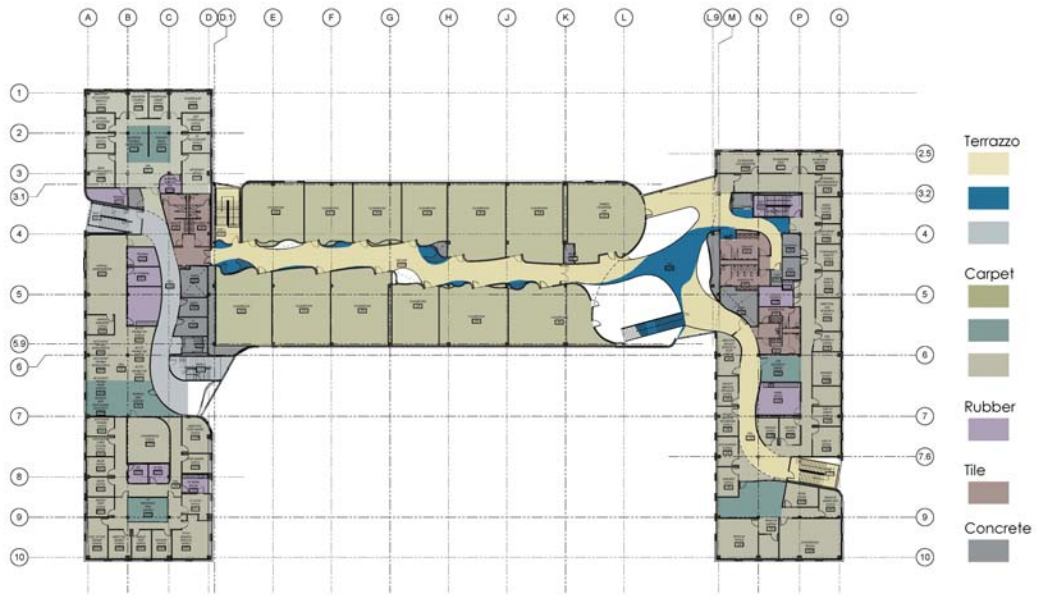
July 20, 2011



SECOND FLOOR | Finish Plan

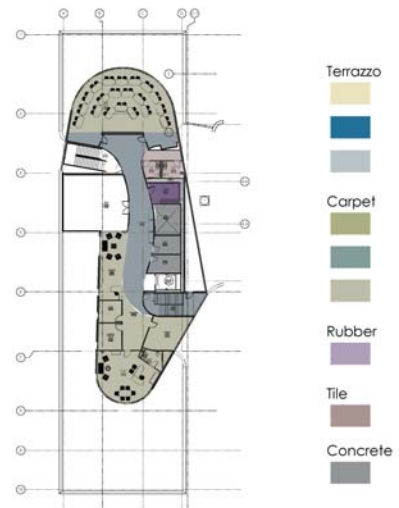
July 20, 2011





THIRD FLOOR | Finish Plan

July 20, 2011



FOURTH FLOOR | Finish Plan

July 20, 2011