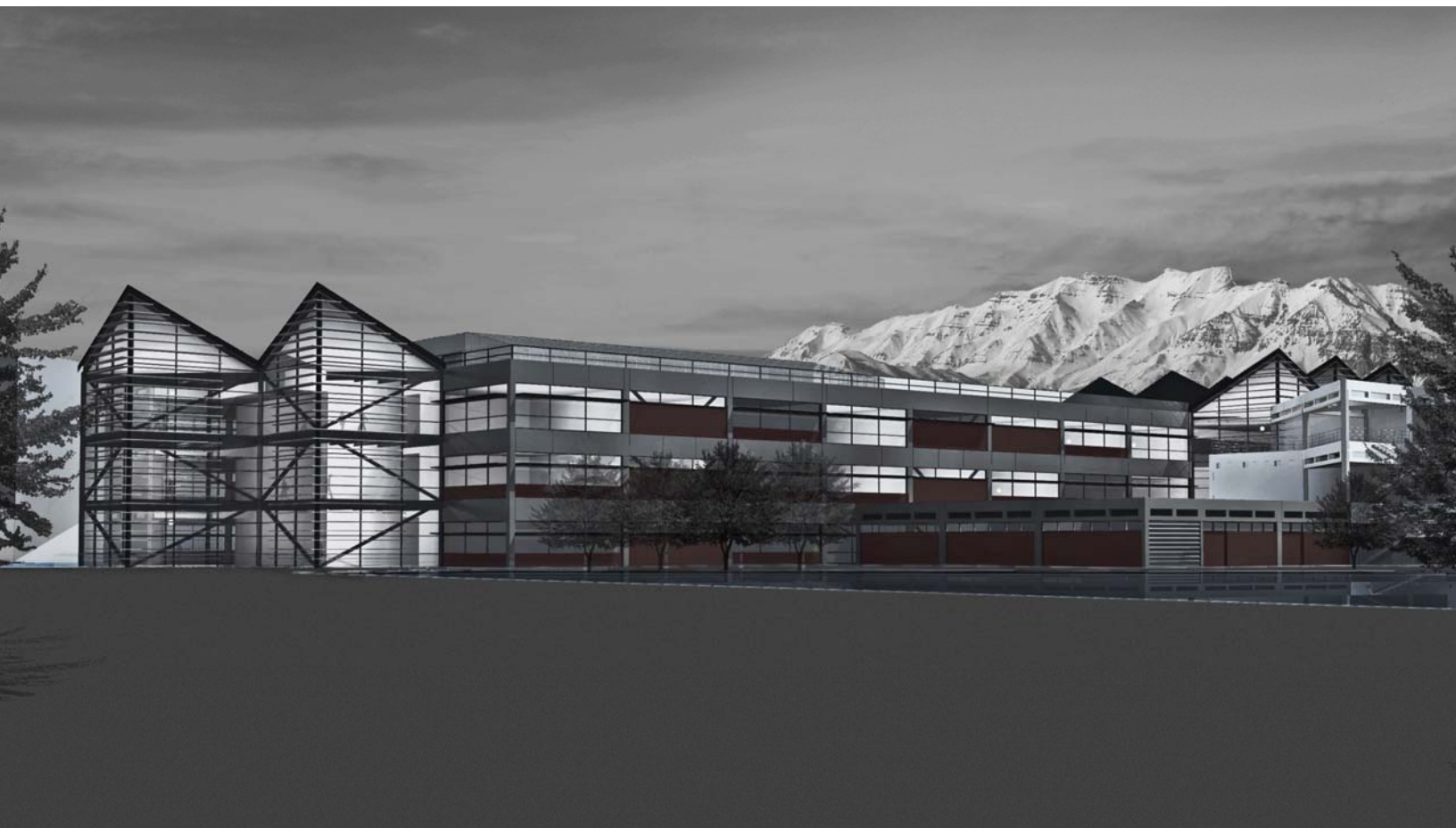


UTAH PUBLIC ART PROGRAM &
UTAH VALLEY UNIVERSITY



CALL FOR ARTIST'S QUALIFICATIONS TO CREATE PUBLIC ART FOR THE
COLLEGE OF SCIENCE & HEALTH BUILDING ON THE CAMPUS OF
UTAH VALLEY UNIVERSITY IN OREM, UTAH



LETTERS OF INTEREST AND QUALIFICATIONS

are requested from artists interested in creating art for the public places of the new Science Building on the campus of Utah Valley University in Orem, Utah. This building will house programs within the UVU College of Science and Health.

UVU COLLEGE OF SCIENCE & HEALTH

The UVU College of Science & Health consists of nine departments—Biology, Chemistry, Dental Hygiene, Earth Science, Exercise Science and Outdoor Recreation, Mathematics, Nursing, Physics, and Public and Community Health—offering more than thirty degree programs at the associate, bachelor, and masters levels. The College focuses on engaged learning and undergraduate student participation in scientific research.



NEW SCIENCE BUILDING DESCRIPTION

The new science building, which is currently under construction, will be a highly visible academic building on campus and a significant node along the University's interior circulation system. The three-story building extends west toward the campus retention ponds and the UCCU Events Center. People traveling along Interstate-15 have an up-close view of this spectacular building.

The building's west façade is dominated by two 60 foot tall glass towers. The folded-plate roof form of these towers is repeated above the tall atrium space and reflects the majestic Wasatch Mountains immediately to the east. The building's exterior materials stay consistent with the well-established campus standards of brick and concrete. Aluminum sun control devices are also prominent on the south and west facades.

Internal features include both wet and dry teaching and research laboratories, state-of-the-art classrooms, offices and a 400-seat auditorium, the largest on campus. More than 10,000 students per day will pass through the building's atrium space, which is located on a large concourse connecting the Physical Education, Liberal Arts and Library buildings to the new project. The atrium is day-lit through a 46 foot tall curtain wall with views directly to Utah Lake and by 3 large light monitors topped with the folded-plate roof forms. The atrium space may be an ideal location for art.



The New Science Building adds 160,000 square feet of modern technical teaching and research space to the University's programs. This space expands their programs from four dedicated laboratories to more than 28 for all the sciences. The new space promotes the involvement of hundreds of undergraduate science students in research projects working with professors.



<http://www.uvu.edu/>

Utah Valley University is a teaching institution which provides opportunity, promotes student success, and meets regional educational needs. UVU builds on a foundation of substantive scholarly and creative work to foster engaged learning. The university prepares professionally competent people of integrity who, as lifelong learners and leaders, serve as stewards of a globally interdependent community.

At UVU, students learn, do and become. With nearly 33,000 students, it is now one of the largest institutions of higher education in Utah--quite an evolution for an institution that began with a few hundred students learning wartime trades on the old Provo fairgrounds in the early 1940s. As a teaching institution that educates more Utahns than any other university, UVU's primary focus is on student success--the academic, professional and personal success of its students.

OREM, UTAH

Orem, Utah is located 45 minutes south of Salt Lake City in Utah Valley with UVU nestled between the beautiful Wasatch Mountains and Utah Lake. With this proximity to stunning natural resources residents have a wide variety of outdoor-recreation opportunities year round.

Utah Valley has unique access to a dynamic economy, numerous employment and career opportunities. Utah Valley is the home to major science and health-related companies such as Adobe, Novell, Tahitian Noni International, Intermountain Healthcare, Central Utah Clinic, and NuSkin. The valley is also the hub of many small, growing businesses.

Orem, self-dubbed "Family City USA" is one of the safest communities in the nation. In 2010, Forbes ranked Orem as the 5th best place in the country to raise a family. Orem maintains a small-town feel while not quite being a small community, boasting around 100,000 residents. The Provo-Orem metropolitan area has more than a half-million people.

Orem has more area devoted to parks compared to city size than any other city in Utah. Utah Valley, and nearby Salt Lake City and Park City have a diverse and thriving art scene.

www.orem.org - www.utahvalley.com - www.sundanceresort.com - www.utah.com

ART SELECTION COMMITTEE STATEMENT

The Art Selection Committee seeks art that is inspired by, and celebrates, the main functions of the new building (science education and research) and/or the physical setting of the building (in a valley, between a large lake and high glaciated mountains that are composed of ancient, fossil-rich limestone and granite intrusions). The College of Science & Health includes the core sciences (Biology, Chemistry, Physics, Earth Science, and Mathematics) and allied health sciences (Nursing, Dental Hygiene, Public and Community Health, Exercise Science and Outdoor Recreation). However, the departments to be housed in the new science building and the adjacent Pope Science Building are core sciences—Biology, Chemistry, Physics, and Earth Science. The health sciences and Department of Mathematics are housed elsewhere.

The entire UVU campus maintains a unified modern architectural theme in all buildings and grounds. The buildings are designed as sets of 30' X 30' square grids intersected by 45-degree-angled hallways and partitions. The exterior theme is red brick, bare concrete, large dark-tinted windows, raw umber window frames and doors, angled rooftop skylights, red-brick patios, courtyards, fountains, reflecting pools, lawns, and large decorative concrete building extensions that enhance the overall architectural pattern. The interior theme echoes the exterior with bare-concrete building frames and supports, white drywall or raw umber metal walls, abundant tinted windows, raw umber doorframe and railings, light-oak wood trim, gray-green carpeting, and earth-tone tiles. Hallway ceilings are open, revealing ductwork and piping, which are painted in various shades of green, red, yellow, orange, white, and umber. Although all buildings echo the same overall theme, each building has its unique architectural variations that distinguish it from all other buildings on campus.

Campus buildings are interconnected in such a way that once people enter campus buildings they often do not go outdoors to access other buildings. Hallways that interconnect the various campus buildings are large and wide, serving as major campus corridors for thousands of people per day. The largest and most utilized of these hallways on campus passes through the east end of the new science building, including the building's atrium.

The new science building has a large rectangular shape with three stories and a rooftop greenhouse. It retains the overall architectural theme of the campus with two major distinguishing architectural features: 1) the east-end atrium positioned over the major campus corridor with large, angular glass skylights, and 2) the two glass towers on the west end with angled tops, visually echoing the mountain peaks. Beyond these two major features, the building consists mostly of laboratories, tiered classrooms, an auditorium, and office space.

The Art Selection Committee has identified the following areas as possible sites for public art but is willing to consider other potential sites that may interest the artist. Interior sites include the west towers, and the approximately 28' tall atrium. Exterior sites include the west and east plazas. The west towers are glass-walled towers with views westward across Utah Lake. These towers will be used mainly by students, as gathering and studying areas. The atrium will be the major focus of the new building. As stated above, several thousand students will pass through the atrium each day, either walking to or from classrooms in the new building, or using the atrium as a convenient passage between other parts of campus. The exterior sites (west and atrium plazas) will be the sites of some outdoor foot traffic, and will be visible from the interior of the new building (the west plaza from the west towers, and the atrium plaza from the atrium).

The Science Building will feature an array / grid of 9 LCD screens measuring approximately 7'x 12'. This array will be visible from the atrium. The committee may also consider artist-designed content in the form of video art, programming, interactivity or other digital forms for this grid of monitors (either as a stand-alone feature, or as a feature that ties with nearby art in some other medium). The costs of the hardware for this portion of the project are already appropriated and will not be borne by the arts budget.

The public art on the UVU campus commissioned to date can be seen at:
http://artsandmuseums.utah.gov/things_to_do/collections/public_art/orem/index.html

BUDGET

\$245,000 has been approved by the Utah State Legislature to commission public art work(s) for this facility. These funds are intended to cover all costs associated with the artist's public art commission, travel, installation and all related expenses.

Finalists will be offered an honorarium to assist with costs associated with time and travel for a full proposal presentation and interview with the selection committee. The honorarium will become part of the total commission award for the selected artist(s).

ELIGIBILITY

Resident American or legal resident artists / artist teams are eligible to apply. Art selection committee members, Utah Arts Council staff and employees, subcontractors or consultants of GSBS Architecture are not eligible for this project. By statute the Committee will give preference to Utah artists and artists from other states that have reciprocal allowances for out of state artists.

SUBMISSION OPTIONS, INSTRUCTIONS AND REQUIRED MATERIALS

Interested artists may submit applications online or hard copy. The deadline is the same for both methods and is not a postmark deadline. Please do not include supplemental materials beyond the requirements listed below. All applications must include the following:

ONLINE METHOD:

- Register at www.dccgrants.org and follow the directions for registration and submitting material for this Public Art Request for Qualifications
- Identify each image with title, year, medium, and dimensions
- Upload up to ten (10) images maximum. These images should be documentation of previous work of site-specific art in public places and must be JPEG format, 1920 pixels maximum on the longest side, 72 dpi, with compression settings resulting in the best image quality under 2MB file size.
- Type in or “copy and paste” in the field requesting the letter of interest of not more than three typewritten pages. This letter should include the artist’s reasons for interest in this project in particular. In doing so, the artist should also describe how his/her work and/or experience relates to the project.
- Type in or “copy and paste” in the field requesting a professional resume.
- If the artist’s work cannot be documented well with still image you may submit movie files via the “Hard Copy Method” listed below. Movie files cannot be submitted via the online portal.

HARD COPY METHOD:

- A PC compatible CD Labeled with applicant's name, and contact information containing:
 1. A letter of interest of not more than three typewritten pages in pdf format. This letter should include the artist’s reasons for interest in this project in particular. In doing so, the artist should also describe how his/her work and/or experience relates to the project.
 2. Up to ten (10) images maximum of previous site-specific public work. All images must be in JPEG format, 1920 pixels maximum on the longest side, 72 dpi, with compression settings resulting in the best image quality under 2MB file size. The image files should be named so that the list sorts in the order of the image listing.

3. A pdf document indentifying each image to include title, year, medium, dimensions.
 4. A professional resume in pdf format
- If the work cannot be documented well with still images a DVD (of no more than 3 minutes) may be submitted as documentation of artist's projects. Please note only one media, movie file or jpeg, can be presented to the committee per artist in this preliminary phase.

If the artist wishes the material returned, an addressed and stamped envelope of ample size and postage for return of the CD or DVD should be included. Material that is not accompanied by a stamped envelope cannot be returned.

The Utah Arts Council will not be responsible for applications delayed or lost in transit. While all reasonable care will be taken in the handling of materials, neither the Utah Division of Arts & Museums nor Utah Valley University Art Selection Committee will be liable for late, lost or damaged materials or electronic files. Faxed or e-mailed applications cannot be accepted.

Utah Valley University Pope Science Building Art Selection Committee reserves the right to withhold the award of a commission or re-release the call for entries should it be determined the finalist proposals are unacceptable.

DEADLINE:

**Complete application packages must be RECEIVED on or before
September 15, 2011 by 5 p.m. MDT (THIS IS NOT A POSTMARK DEADLINE)**

Applications may be sent by mail, courier, hand delivered or express delivered to:

Jim Glenn, Utah Public Art Program
RE: UVU Pope Science
300 S Rio Grande
Salt Lake City, UT 84101

SELECTION PROCESS AND SCHEDULE

The Selection Committee will review proposals from which a short list of semi-finalists will be selected and invited to develop a proposal. The finalist honorarium will be applied toward the commission amount for the artist(s) awarded the commission. Final selection(s) will be made from the semi-finalists.

September 15, 2011	Deadline for receipt of qualifications
October 5, 2011	Committee reviews applications
November 30, 2011	Finalist presentations / proposals

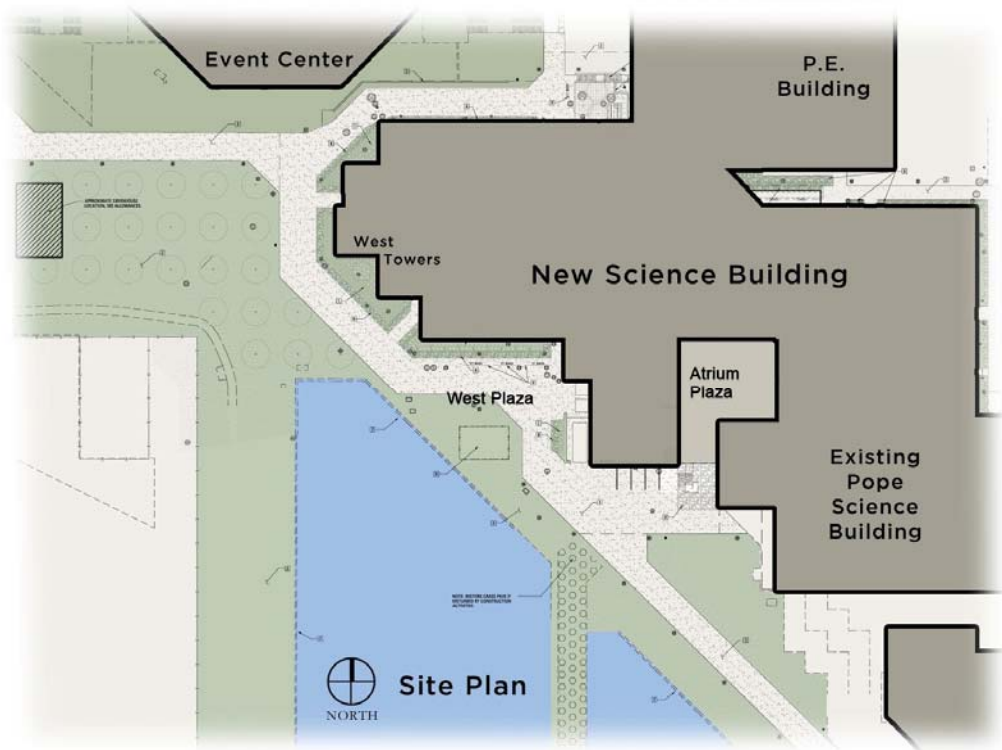
ART SELECTION COMMITTEE

Kurt Baxter	Project Manager, DFCM
Blair Buswell	Artist, community representative, and UAC Board of Directors
K. Newell Dayley	Dean, UVU School of the Arts
Daniel Fairbanks	Associate Dean, UVU College of Science / Health
Daniel Horns	Professor, UVU College of Science / Health
Jim Michaelis	Associate Vice President, UVU Facilities / Planning
Val Peterson	Vice President for Administration, UVU
Sam Rushforth	Dean, UVU College of Science / Health
Garth Shaw	Principal, GSBS Architects
Renee Van Buren	Professor, UVU College of Science / Health
Marcus Vincent	Associate Professor, Art and Visual Communication, UVU

Please do not contact committee members. If you have any questions about this or other projects information is available at: www.utahpublicart.org

Or contact: Jim Glenn at 801-533-3585 or e-mail at: jglenn@utah.gov
Fletcher Booth at 801-533-3586 or e-mail at: fbooth@utah.gov

Images courtesy of GSBS Architects and UVU



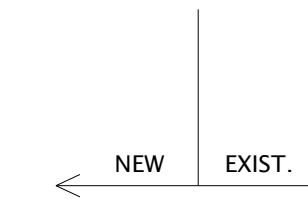
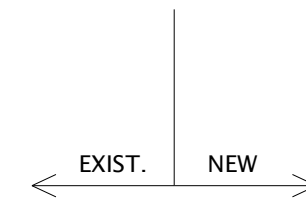
Atrium – looking east



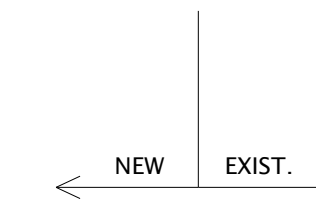
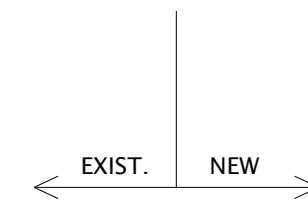
Atrium – south wall



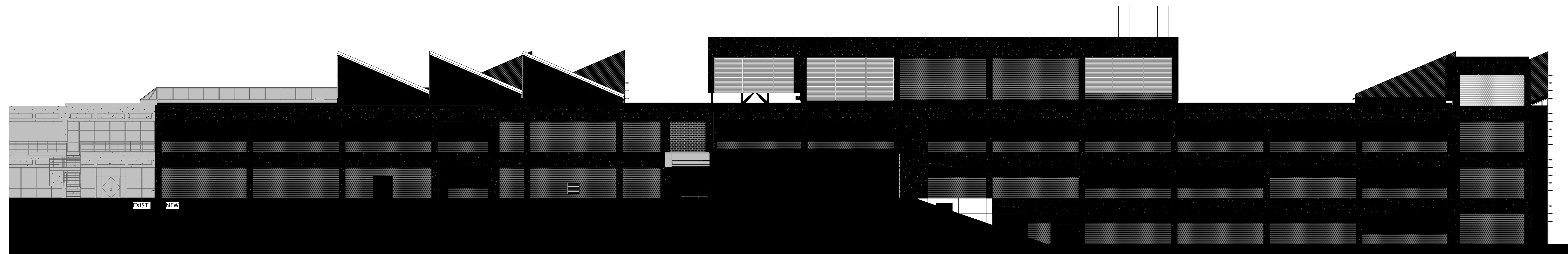
Atrium - looking west



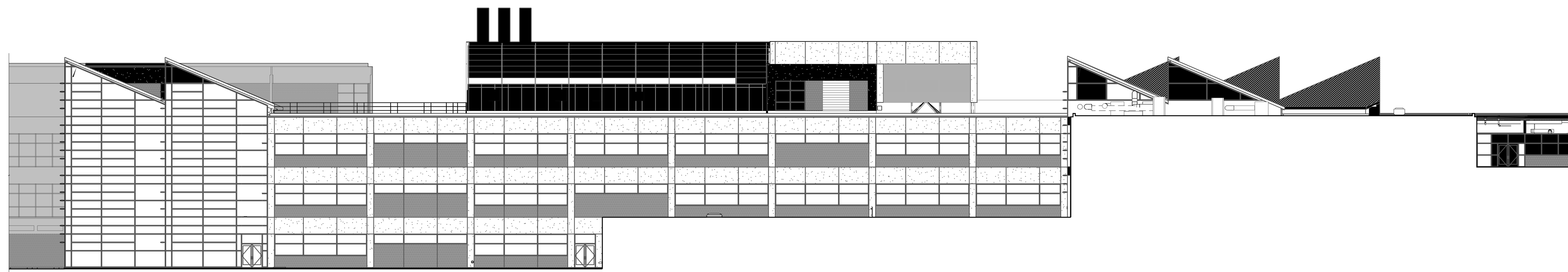
4 WEST ELEVATION
AE-201 1/16" = 1'-0"



3 EAST ELEVATION
AE-201 1/16" = 1'-0"



2 NORTH ELEVATION
AE-201 1/16" = 1'-0"



1 SOUTH ELEVATION
AE-201 1/16" = 1'-0"

